

COMMUNITY PATROLS OF NEW ZEALAND



JULY PATROLLER BRIEFING



@communitypatrolsof
newzealand



048170228



www.cpnz.org.nz



Our hearts go out to the loved ones of Constable Matthew Hunt



A Word from our Chair.....

I would like to dedicate this message solely to our thoughts for Constable Matthew Hunt, who tragically died a short time ago. I, along with you all have watched as the Police and many others around the country showed their commiserations with a minute silence a week after the death. This affected the entire Police organisation, sworn or civilian, the organisations that work with the Police such as CPNZ, Neighbourhood Support, Victim Support and many others. I feel particularly for those officers in training at Police College, the thoughts that they might have about career choices will be in their minds. But I am sure that when they complete training they will be out on the street doing what all Police have done, keeping our communities safe.

As patrollers, we are very close to our colleagues in blue. We are all feeling for our local Police as they all work through their own feelings of loss and sadness. There are Patrollers who knew, worked with and respected Constable Hunt. I know they are going through a lot as well. I will be meeting a few of them next week as well.

Next week CPNZ will have a presence at the funeral. Myself, other Trust Board members will be there and I am sure there will be many Patrollers in attendance, giving him a sendoff, deserved by one of this country's finest officers. Many of my ex-Police Officer colleagues were also affected by this death, and I know many of them will be there to show their respect. Once a Police officer, always a Police Officer.

This is certainly a reminder of the fragility of life, even those trained to deal with aggressive members of the community we all serve. Our thoughts go out to the Police Officer injured in the event. He also put his life on the line and faced a particularly grueling situation.

They are both in our thoughts, and long may they remain there as we all work through the sadness.

**Chris Lawton,
Trust Board Chairperson**

A handwritten signature of Chris Lawton in blue ink, written in a cursive style.

School Holidays are starting this weekend! Now may be the time to consider your Patrol undertaking day shifts and focusing on areas tamariki spend their time. This is a good opportunity to ensure they are keeping safe.



Last week was national volunteer week....we would love to see how your Patrol celebrated. Please send any pictures and blurbs to office@cpnz.org.nz

WHO DO I ASK?

We want you to be confident in who to contact at National Office so that we can assist you quickly...if your role within the Patrol means you contact National Office from time to time, please keep this section handy.

Sarah - database@cpnz.org.nz for:

- Vetting applications
- ID card applications
- Informing CPNZ when:
 - someone leaves your Patrol
 - there is a change in leadership in your Patrol (eg Patrol Leader, PLO, etc)

Sarah - accounts@cpnz.org.nz for:

- Questions about:
 - ordering equipment and uniform
 - affiliation

Toni - training@cpnz.org.nz for:

- Questions with the online training modules
- Advice on possible additional Patrol training activities

Katryn - office@cpnz.org.nz for:

- General advice and support ("where do I find the X form" / "what do I do in X situation" / etc)
- Awards (certificates, shields, service badges, etc)
- Patroller Briefing content eg photo of your Patrol

Cheryl - nsm@cpnz.org.nz for:

- Funding applications
- Complaints and support
- Escalation of concerns

The CPNZ National AGM was held electronically on Sunday 28th June 2020. Thank you to all those Patrols who emailed in their electronic vote, despite the restrictions of COVID-19. Your ongoing commitment to the CPNZ AGM is important!



We have lots of stories about Patrol's and Patroller's achievements along with the previous Patroller Briefings available on the website under our News tab. You can explore further by logging into the members tab with your CPNZ ID number (found on your ID card) and the password is your surname with a capital letter (Smith)

Have you joined our Facebook page? There is lots of positive recognition around CPNZ popping up on social media right now. One example is the pictured interview between Wellington Ethnic's Patrol Leader and their PLO being published by NZ Police's Facebook page.



SARAH - VETTING, ID CARDS, DATABASE UPDATES AND ACCOUNTS

ACCOUNTS@CPNZ.ORG.NZ/
DATABASE@CPNZ.ORG.NZ/
0274550007

A reminder to ensure that you have a CPNZ issued ID card. This will be blue, have your photo and a unique ID number. This is the correct type of identification which, under our Memorandum of Understanding with NZ Police can be worn into a Police Station by a CPNZ Patroller. If you do not have an ID card, if you have lost your ID card, if your ID card is damaged, or if the photo no longer looks like you, please work with your Patrol Leader so that a new one can be organised with me at National Office.



TRAINING@CPNZ.ORG.NZ /
0272966002

TONI: TRAINING AND EVENTS



After 2.5 years, we have officially passed the training deadline!
Whoohoo!

Congratulations and thank you to all Patrol Members who have completed all ten mandatory modules. Your commitment to the professionalism within our organisation is the reason we are able to broaden the relationship with our partners and within our local communities.

If you have recently come back from leave or are new to CPNZ, please work with your Patrol Trainer to get this training complete in the set out time-frame. I am also available to help where needed.

KATRYN: SUPPORT AND COMMUNICATIONS

OFFICE@CPNZ.ORG.NZ /
0272932877

It's shaping up to be a big second half of the year as I move back into getting our policies finalised and continue on with the Best Practice Handbook to assist Patrols with their everyday questions.

Some of these Policies will relate directly to Patrollers, such as a Patrolling Policy which will bring together several of our existing governing documents about Patrolling. Other Policies will be more focused on Patrol Leaders around the running of a Patrol. You can expect these to be rolled out over the next six months. We will keep you up to date as and when each document is released.



RECOGNISING EXCELLENCE

KAWERAU

Nigh on 30 years ago, 2 local people Fred and Flo Rowan were asked by Kawerau Police to start a group with a view to being the 'eyes and ears' of the Community. Thus the Kawerau 'Knight Owls' were formed. In 2002 the group was also one of the founding members of what is now CPNZ - Ngā Manu Tāiko o Aotearoa.



Pictured: Top - Jeff Parsons. Bottom - Lynn Neal

Recently, two members of that founding group were presented their 25 year service awards by Police Liaison Officer Sgt Shane Tailby. An amazing accomplishment for the Kawerau Community. Congratulations to you both that is an outstanding achievement.

Patrol Secretary - Wendy Peri

RAGLAN



Congratulations to Raglan Community Patrol, who have passed the milestone of being an active Patrol for over twenty five years. The CPNZ Trustees were thrilled to gift one of our celebratory banners for the event. Here's to another successful twenty five years Raglan!

DANNEVIRKE



It is wonderful seeing Patrols being recognised by their local community. The Bush Telegraph recently published this article about the great work that Dannevirke Community Patrol does for their town.

Articles like this can be a asset to bringing on potential Patrollers and can be used to gain sponsors to support the Patrol.



Some Tips & Tricks -Sponsorship

COVID has resulted in some of our local communities being faced with an economical struggle. Those businesses who have supported your Patrol in the past, might not be in a financial position to do so for the next 12 months and this could mean that your Patrol's past income streams may be reduced. Here are some tips around how you might be able to assist your Patrol Leader in finding the money.

Discuss with your Patrol Leader how you could:

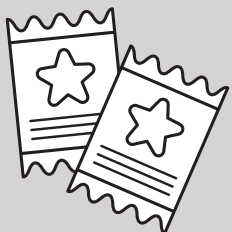
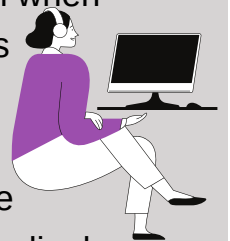
Approach businesses who might be able to support you through offering their services. For example instead of finding \$200 for a vehicle service, you might approach a mechanic who will do a service for free or at cost.



Approach your local council for help. Present a case about what you do for your community and request your council's support in a small way. For example, most councils will have business fuel cards, if they were to give you one and pick up the invoice each month, this would allow the Patrol to continue to run as often as you like instead of being hamstrung by fuel costs.

Set up a Go-Fund-Me page or Give-a-little page. Today less people carry cash when walking around, so doing a bucket collection out the front of the supermarket is no longer an overly effective tool. Go-Fund-Me allows people to donate as much or as little as they want and the money will go directly to the Patrol.

It is not worth just setting one up though, you need to advertise it and make the link as accessible as possible - Ways to do this is advertise it on your social media, have other local businesses advertise it on their websites and social media and even do emails to your Patrollers asking them to forward it onto everyone they know.



Arrange a raffle. These are an excellent way of raising money with very little effort. The contents of the prize can be gift-vouchers from a local business (see our top point regarding donations of goods and services) and re-gifted items your Patrollers were given at xmas and haven't opened yet. Set yourself up at the local farmers markets or other event for a couple of weeks in a row and earn up to \$1000 for one prize.