

COMMUNITY PATROLS OF NEW ZEALAND



SEPTEMBER 2020 PATROLLER BRIEFING



@communitypatrolsof
newzealand



04 817 0228



www.cpnz.org.nz



Congratulations Dunedin North Community Patrol on their new vehicle
with CPNZ Livery!



A Word from our Chair.....

Welcome to this month's Patroller Briefing,

The recent renewal of the COVID-19 threat has once again caused us to stop or delay patrolling for a short period. While I am hopeful for the future I looked at this current situation as a test for us as an organization, as we will probably have to face this again in some part of the country. In particular, I want to recognise the work done by the Patrol Leaders in making their decisions whether to patrol or not. Decision making is leadership and a Patrol must have strong and effective leadership.

Over the last few years, the CPNZ Board has recognised the need to ensure we have the right support in place at all levels. We have appropriately focussed on Patroller training and the rounds of training roadshows in the districts, and the online modules are testament to that. Our focus for the next 12 months is more on the support we can provide to the Patrol Leadership team. Coupled with our priority of Organisational Excellence we are developing a Manual of Best Practice which will encapsulate all of our policies, procedures, governance documents so that Patrollers and Patrol Leaders will have easy access to resources to guide them through all the compliance requirements as well as understanding what is considered 'best practice' in running a successful Community Patrol.

In order to do this, the Board Members and staff have embarked on a considerable amount of work which will include communication and consultation with a number of key people made up of Patrollers and Patrol Leaders from around the country. I have no doubt that when this is launched by the middle of 2021 we will have set the scene for the next ten years of growth and development of this organisation.

Keep safe.



NZ Police Remembrance Day is 29th September. Please liaise with your PLO if you are able to attend your local event to represent CPNZ in thanking our fallen Officers.



The 'Let's End Loneliness' website has been launched as a resource for anyone experiencing or concerned about loneliness. Visit letsendloneliness.co.nz for more information.

WHO DO I ASK?

We want you to be confident in who to contact at National Office so that we can assist you quickly...if your role within the Patrol means you contact National Office from time to time, please keep this section handy.

Sarah - database@cpnz.org.nz for:

- Vetting applications
- ID card applications
- Informing CPNZ when:
 - someone leaves your Patrol
 - there is a change in leadership in your Patrol (eg Patrol Leader, PLO, etc)

Sarah - accounts@cpnz.org.nz for:

- Questions about:
 - ordering equipment and uniform
 - affiliation

Toni - training@cpnz.org.nz for:

- Questions with the online training modules
- Advice on possible additional Patrol training activities

Katryn - office@cpnz.org.nz for:

- General advice and support ("where do I find the X form" / "what do I do in X situation" / etc)
- Awards (certificates, shields, service badges, etc)
- Patroller Briefing content eg photo of your Patrol

Cheryl - nsm@cpnz.org.nz for:

- Funding applications
- Complaints and support
- Escalation of concerns

Welcome Spring!

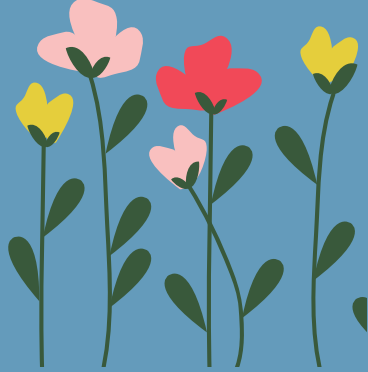


As the weather warms up, please be extra cautious while driving during a Patrol, particularly if you are rural based.

1 Caution around changing sun-glare when driving

2 Thaws changing the flow and velocity of your local waterways

3 Sticking to paved roads to avoid getting bogged in freshly thawed ground



The National Shake out is only a month away!

This is a great opportunity for your Patrol to get more involved in the community by working with your local Civil Defence in getting the message out there. Think about setting up a small stall to hand out Shake Out flyers, talk about the importance of being prepared and throw in some information about your Patrol while you have people's attention!



Many people are feeling the mental pressure of the unusual times we have been experiencing recently. The disruption that COVID-19 is causing to daily life shouldn't be underestimated.

If you are feeling down about this, please know you are not alone. The Mental Health Foundation recognises this and is focusing this year's Mental Health Awareness Week (21 - 27 September) around working together to reimagine what wellbeing looks like during and after COVID-19. You can find out more about the week and where to find support here: www.mentalhealth.org.nz



SARAH - VETTING, ID CARDS, DATABASE UPDATES AND ACCOUNTS

ACCOUNTS@CPNZ.ORG.NZ/
DATABASE@CPNZ.ORG.NZ/
027 455 0007

Just a reminder about ID Card security:

- If you go on leave (2 months or more) from your Patrol, your ID card is held onto by the Patrol Leader until you return
- If you transfer to another Patrol, your ID card must be surrendered to the Patrol Leader. Your Patrol Leader will mail the ID card directly to the new Patrol and it will be returned to you once you begin Patrolling with the new group. Your Patrol Leader will update CPNZ National Office of the transfer as it progresses.
- If you resign from a Patrol or have your membership terminated, your ID card must be surrendered to the Patrol Leader. Your Patrol Leader will update CPNZ National Office of your membership ending and the ID card will be destroyed.



TRAINING@CPNZ.ORG.NZ /
027 296 6002

TONI: TRAINING AND EVENTS



I recently attended Marton CP's training evening where the Patrol Trainer asked each member to come up with a scenario around what they found when visiting one of their local hot spots. They needed to decide what was happening, what they needed to report to Comms and how they would communicate that information, via police radio or phone. There were some very interesting scenarios on the night.

Exercises like this in Patrol meetings and training events can be very helpful in making the correct responses automatic in real life situations, why not give it a try?

KATRYN: SUPPORT AND COMMUNICATIONS

OFFICE@CPNZ.ORG.NZ /
027 293 2877

As previously communicated, the CPNZ National Office has been working to develop a number of Policies which have been identified as critical to our organisation.

The first batch of these Policies have been signed off by the Trust Board and are now available on the CPNZ website within our locked Members tab.

We have been, and continue to be emailing out one of these Policies each week to allow Patrols time to read, discuss and implement.

So far, your Patrol will have received the Health & Safety Policy, Flashing or Revolving Beacon Policy and the Patrolling Policy. We ask that all Patrollers read these Policies, as they have real world implications for Patrolling. Please ask your Patrol Leader if you have any questions.



Congratulations to Selwyn CP whose hard work in securing a new Patrol vehicle has been successful. The local paper published an article about the Patrol's dedication to their local community through projects with Christchurch Police.

Community patrol helps police; group gets new vehicle

By Devon Bolger

VOLUNTEER community patrols will help police combat car and building site thefts.

The Selwyn Community Watch has been tasked with knocking on the door to solicit people about keeping their possessions safe.

Senior Sergeant Stephen McDonald said the new strategy will involve the community walk and possibly other similar groups.

"It is a three-pronged approach, one is going to be patrolling areas where car theft has happened. We will also have and door knock bringing their information on why it is happening," he said.

"We will be also going to building sites and having face-to-face meetings with site managers."

Local police and the community watch will be trying to identify housebreakers with security cameras who can be contacted if crime occurs in the area.

McDonald said they are still determining exactly where they will be doing knocking but

ON PATROL: Selwyn Community Watch members Zim Hsuachid, Errol Wood, Kathy Cooper, Murray Allison, Bruce Robinson, district councillor Debra Friesen with Senior Constable Andy Williamson and Senior Sergeant Glen Foster.

PHOTO: GREGG SUGAN

Businesses and organisations that helped to purchase the patrol vehicle:

- New World Lincoln
- New World Rolleston
- Selwyn Community Pharmacy
- Lions Club of Ellersford
- Robinson and District Lions Club
- Selwyn District Council
- Challenge Lincoln
- The Famous Grouse Hotel Lincoln
- H&A Auto Electrical
- AM

The car was purchased with the help of sponsorship from businesses and organisations.

The patrol is run by volunteers who work along with police. There are 39 active patrols and Allison said they are always interested in getting more members.

For more information go to the Facebook page Selwyn Community Watch

NORTH HARBOUR

Congratulations to Jane Hunter of North Harbour CP who has been nominated for Westfield Local Heroes award. Jane has been a dedicated member of North Harbour CP for many years and if successful in winning the \$10,000 prize, she intends to use it to purchase a new Patrol vehicle. To vote for Jane, visit: <https://www.westfield.co.nz/albany/story/3eAMPKgQypGSyo1Xvjddwe/local-heroes-2020>



A WORD FROM PORIRUA PASIFIKA COMMUNITY PATROL (PPCP) IT TAKES A VILLAGE!

KNoa'ia, Mauri, Ni Sa Bula Vinaka, Fakaalofa lahi atu, Tālofa, Kia orana, Mālō e lelei, Mālō nī, Talofa lava, Tēnā koutou katoa and warm Pacific greetings to you all.

PPCP started a few years ago but due to different circumstances we have only in the last year started to build momentum and now we are out patrolling! That is due to the support of so many people including our Porirua Community Police, Regional Police, Volunteer Porirua, the CPNZ team, our regional patrols (Tawa, Kapiti, Waikanae and Wellington Pasifika), our local residence groups and recently the Hibiscus Coast Community Patrol. It's fantastic to have so many people offer advice and support!

We didn't have a branded vehicle so when the Hibiscus Coast were looking to sell their vehicle (you may have seen this in the CPNZ monthly newsletter). Given that we were looking to buy our first vehicle and to have a CPNZ branded car was too good an opportunity to miss out on, so PPCP contacted the Hibiscus Coast. While we had minimal funding available, the Hibiscus Coast payed it forward and we were able to secure the vehicle. Not only that but they went above and beyond to help our patrol with meeting us half way in Taupo to hand over the vehicle and discuss and provide some equipment, provide advice and so much more! Thanks Hibiscus Coast!

We would also like to acknowledge the financial support from CPNZ who have assisted us in paying for the vehicle and ongoing costs through the funding application process.

We will be doing some promotion in collaboration with the Porirua Community Police over the next couple of months as well as a Safer Plates Event in September!

We are very grateful for everyone's support!

LOOKING BACK AT AUGUST

PUKEKOHE

Written by Pukehoke Patrol Leader, Tina Hall

Pukekohe Community Patrol and our local PLO Constable Kelly Cochrane have a strong relationship to ensure the smooth running of the Community Patrol. One of these is local training between Police and the 4 Patrols within the Franklin area. We meet every 3 month's to run through training which is going to give Patrols more tools to be able to assist the Police where we can. In the past we have run training sessions which involved local Volunteer Fire, and St John ambulance on how to use a fire extinguisher, and putting out fires as well as using the defib that we have in the vehicle. We have also had previous training sessions on our manual log sheets, around what the police require to be written for events, information that helps them, and the accuracy of these reports.



Our latest session was hosted by Pukekohe, however had attendance from all 4 Franklin Patrols.



This was lead by our new Communities Sergeant Wayne Paxton, and a couple of our Local PLOs, Constable Kelly Cochrane (Pukekohe) and Kevin Smith (Pokeno). At this event our patrols were taught what to do in the event of either being called on by Police or coming across an accident scene. Where to position our vehicles, what evidence to preserve incase the case needs to be taken further and

most importantly what Health & Safety gear we need to have onboard - e.g long sleeved Hi vis Jackets with the reflective strips.

All of the Franklin area patrols appreciate the time given to us, to train our patrollers so that we can assist Police in events with being partly rural.

MATAMATA

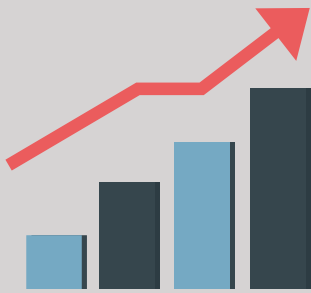
MP Tim van de Molen was a guest ride along on one of Matamata CP's Friday night Patrols and saw first hand how the Patrol helped their local Police when asked to deal with an issue. At the end of the night, a selfie of the team was in order.



TASMAN DISTRICT OFFICER OUT AND ABOUT



Tasman DSO Marty Price, recently visited Blenheim CP committee who have done some amazing work with setting up Picton Patrol. Marty had the pleasure of accompanying Patrol Leader Brent out patrolling in Blenheim. They then transferred over to Picton. Constable Andy was covering the station that night and assisted the Patrol by providing relevant details for the local area. Marty was very pleased to see the overall enthusiasm for the new Patrol.



Some Tips & Tricks -Loading Statistics

If you load statistics on behalf of your Patrol, this tips and tricks section is for you.....

You can now only access the stats from the CPNZ website. Please go to www.cpnz.org.nz and select the 'Statistics' tab to reveal the drop down box and choose 'Load Statistics'



Select your District then select your Patrol:

District Committee and Local Patrol Monthly Statistics

- [Auckland City](#)
 - [Auckland City District Committee](#)
 - [Auckland Safety Community Patrol](#)
 - [Blockhouse Bay Community Patrol](#)
 - [Ellerslie Community Patrol](#)

Click the 'Load your Patrol stats' button or the month you wish to load statistics for:

Auckland Safety Community Patrol

[<< Back to patrol list](#)

Keeping track of your work is important!

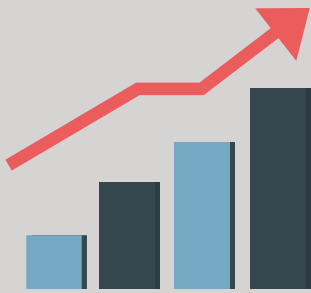
- It allows you to measure and quantify your contribution to your community.
- It allows you, and National office, to justify your contribution to existing and potential funders.
- It allows you to assess your strengths and weaknesses and decide where to put your energies in future.

[Load your patrol stats](#)

Use the [paper worksheet](#) to record your activities when out on Patrol.

Statistics provided in the last six months

Sep 2020	Aug 2020	Jul 2020	Jun 2020	May 2020	Apr 2020
?	?	?	?	?	?



Some Tips & Tricks

-Loading Statistics pt2

You will be taken to a log in screen - this log in is the same credentials as logging into the CPNZ website:

Your CPNZ ID number is the number printed on your CPNZ ID Card. Your password is your surname with the first letter capitalised eg *Smith*

Troubleshooting:

If your surname as a password doesn't work, try all lower case eg *smith*

If your number has zeros at the start of it, please do not include these when logging in eg 001234 = 1234

If your surname is hyphenated or double barreled, remove the hyphen or space eg. Smith-Jones OR Smith Jones = *Smithjones*

CPNZ ID
123456

Password
.....

Log In

If you cannot log in, please contact your Patrol Leader or National Office

Fill in the Stats form (please remember to fill in every field, even if it is a zero) then scroll to the bottom of the screen and click on the 'Submit' button

Administration

10

submit Cancel

When you press 'Submit' an email will automatically be sent to your Patrol's email and statistics@cpnz.org.nz overseen by National Office.